

## 1.2 The 3-channel ECG Recorder: BTL-08 S3

This versatile and reliable unit features 3-channel ECG monitoring and averaging of ECG curves. Similar in operation to the 1-channel BTL-08 S1, the unit is easy to use, light-weight, and completely portable.

The ECG can be optionally equipped with analysis, interpretation in words, spirometry, connected to a PC with the BTL-08 Win software, or upgraded to an advanced PC based stress test system.

*The main features include:*

- Compact three channel ECG with records and prints from 12 leads
- Averaging of ECG curves with marks
- Easy-to-use operation
- Operating from mains or rechargeable battery
- Light-weight with optional carry case
- One touch automatic or manual operation
- Parameters can be pre-set and saved into a profile
- Thermal printer specially designed to prevent paper jamming
- Well organised functional keyboard and light indicators
- Control of contact of electrodes
- Defibrillation protection

Expand your ECG with the following options:

- Full analysis and interpretation in words
- Connection to a PC with the BTL-08 Win software
- Upgrade to stress test system with the BTL-08 Win Ergo software



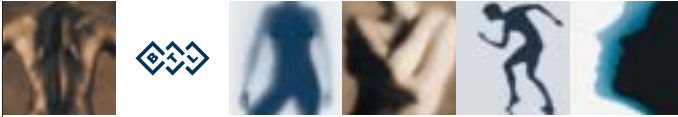
Digital ECG Recorders II

**Standard accessories:** patient cable, set of chest electrodes (6pcs), set of clamp electrodes for extremities (4pcs), ECG gel (0.2l), paper role (58mm), power cord, user manual

**Additional accessories:** patient cable for self-adhesive disposable electrodes, self-adhesive disposable electrodes - adult size (50mm), self-adhesive disposable electrodes - children size (40mm), chest belt (10 x 135cm), belt for extremities (2.5 x 45cm), plate electrodes (20mm), carry case, ECG trolley

### Specifications

Number of channels	3
Number of leads	12
Keyboard	Functional
Paper width	58mm
Paper speed	5, 25, 50mm/s
Sensitivity	5, 10, 20mm/mV
User-defined profiles	1
Filters	Adaptable mains 50-60Hz, muscular 35Hz, baseline filter 0.125Hz (1.5s)
Transmission in automatic mode	Real-time
Mains supply	Built-in accumulator, 115V/230V, 50-60Hz
Dimensions	276 x 168 x 74mm
Weight	Approx. 2kg



## BTL-08 ECG: Overview of functions

Specifications	BTL-08 S1	BTL-08 S3	BTL-08 SD	BTL-08 MD	BTL-08 MD3	BTL-08 MT
<b>External unit</b>						
Display	Light indicators	Light indicators	Graphic display	Graphic display	Graphic display	Touch screen
Dimensions of display (mm)	-	-	70x36	70x36	70x36	90x125
Screen resolution (dots)	-	-	128x64	128x64	128x64	300x200
Keyboard	Functional	Functional	Combined alphanumeric and functional	Combined alphanumeric and functional	Combined alphanumeric and functional	Combined alphanumeric and functional, touch screen buttons
Battery indicator	Light control	Light control	On the display	On the display	On the display	On the display
Electrode contact control	Yes	Yes	Indication of contact of each electrode	Indication of contact of each electrode	Indication of contact of each electrode	Indication of contact of each electrode
Connector for accessories	No	No	No	Yes	Yes	Yes
<b>Printer</b>						
Paper width (mm)	58	58	58	112	112	112
Paper speed (mm/s)	5, 25, 50	5, 25, 50	5, 10, 25, 50	5, 10, 25, 50	5, 10, 25, 50	5, 10, 25, 50
<b>Signal processing</b>						
Number of channels	1	3	6	12	3	12
Number of leads	12	12	12	12	12	12
Displayed leads	-	-	1	1	1	3
Manual and automatic mode	Yes	Yes	Yes	Yes	Yes	Yes
Printed leads in automatic mode	1	1, 3	1, 3, 6	3, 6, 12	3	3, 6, 12
Printed leads in manual mode	1	1, 3	1, 3, 6	3, 6, 12	3	3, 6, 12
Transmission in automatic mode	Real-time	Real-time	Real-time, synchronic	Real-time, synchronic	Real-time, synchronic	Real-time, synchronic
Pacemaker detection	No	No	Yes	Yes	Yes	Yes
Sensitivity (mm/mV)	5, 10, 20	5, 10, 20	2.5, 5, 10, 20	2.5, 5, 10, 20	2.5, 5, 10, 20	2.5, 5, 10, 20
Stored records (10-s long strips)	-	-	6	6	-	14
Max. length of stored record (s)	-	-	10	10	-	10
Max. length of printed record in automatic mode (s)	10	10	20	20	20	20
Long ECG recording 1 lead/2 leads (min)	No	No	9/No	9/No	9/No	12/24
<b>Digital filters</b>						
Adaptable mains filter (Hz)	50-60	50-60	50-60	50-60	50-60	50-60
Muscle tremor filters (Hz)	35	35	35, 25	35, 25	35, 25	35, 25
Baseline filters (Hz)	0.125 (1.5s)	0.125 (1.5s)	0.125 (1.5s), 0.25 (0.6s), 0.5 (0.3s), 1.5 (0.1s)	0.125 (1.5s), 0.25 (0.6s), 0.5 (0.3s), 1.5 (0.1s)	0.125 (1.5s), 0.25 (0.6s), 0.5 (0.3s), 1.5 (0.1s)	0.125 (1.5s), 0.25 (0.6s), 0.5 (0.3s), 1.5 (0.1s)
<b>User pre-set profiles</b>						
Number of profiles for automatic and manual mode	1	1	3	5	1	10
Number of profiles for Long ECG recording	-	-	3	5	-	10
Indication of profile	Light control	Light control	Displayed name of profile	Displayed name of profile	Displayed name of profile	Displayed name of profile

Zoryn Trading Corp.  
 web: [www.zoryn.com](http://www.zoryn.com)  
 e-mail: [zoryntrading@yahoo.com](mailto:zoryntrading@yahoo.com), [zoryn@att.net](mailto:zoryn@att.net)  
 18459 . Pines Boulevard # 155 Pembroke Pines,  
 Florida 33029 USA.  
 Phone: 954-392-6633 Fax: 954-392-6020