

1.4 The 12-channel ECG Recorder with Graphic Display: BTL-08 MD & The 3-channel ECG Recorder with Graphic Display: BTL-08 MD3

The BTL-08 MD and BTL-08 MD3 are high performance ECGs with functional design, graphic display and alphanumeric keyboard. The display shows ECG curve from 1 selected lead, and informs the operator about paper speed, sensitivity, filters, heart rate, contact of each electrode, and other data. The built-in accumulator makes the unit portable and suitable for use even in ambulatory and home care.

The BTL-08 MD3 features 3-channel ECG monitoring and averaging of ECG curves, and it allows the user to pre-set 1 profile with selected parameters for an easy one-touch start of the record. The BTL-08 MD enables the user to print 12 channels at a time and to configure up to 10 profiles with pre-set parameters. In addition, patient data and physician identification can be entered and included in the stored record and its print-out.

The main features include:

- 12-channel ECG for printing and recording from 12 leads (BTL-08 MD model) / 3-channel ECG for printing and recording from 12 leads (BTL-08 MD3 model)
- Functional design with graphic display
- Combined alphanumeric and functional keyboard
- Easy-to-use operation
- Averaging of ECG curves with marks
- Long ECG recording
- Mains or battery operation
- Automatic and manual operation
- Synchronic and real-time transmission in automatic mode
- Indication of contact of each electrode
- Pacemaker detection
- Defibrillation protection



Specifications

	BTL-08 MD	BTL-08 MD3
Number of channels	12	3
Number of leads	12	12
Displayed leads	1	1
Display	LCD, 70 x 36mm	LCD, 70 x 36mm
Keyboard	Combined alphanumeric and functional	Combined alphanumeric and functional
Paper width	112mm	112mm
Paper speed	5, 10, 25, 50mm/s	5, 10, 25, 50mm/s
Sensitivity	2.5, 5, 10, 20mm/mV	2.5, 5, 10, 20mm/mV
User-defined profiles	10	1
Filters	Adaptable mains 50-60Hz, muscular 35Hz, 25Hz, baseline filter 0.125Hz (1.5s), 0.25Hz (0.6s), 0.5Hz (0.3s), 1.5Hz (0.1s)	
Transmission in automatic mode	Real-time, synchronic	Real-time, synchronic
Number of stored records	6	-
Maximum length of stored record	10s	-
Mains supply	Built-in accumulator, 115V/230V, 50-60Hz	
Dimensions	330 x 270 x 70mm	330 x 270 x 70mm
Weight	Approx. 3.2kg	Approx. 3.2kg

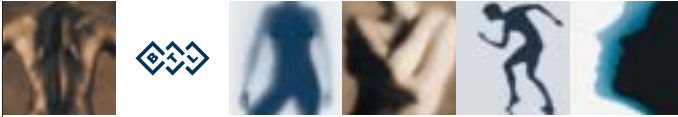
Standard accessories: patient cable, set of chest electrodes (6pcs), set of clamp electrodes for extremities (4pcs), ECG gel (0.2l), roll of paper (112mm), power cord, user manual

Additional accessories: patient cable for self-adhesive disposable electrodes, self-adhesive disposable electrodes - adult size (50mm), self-adhesive disposable electrodes - children size (40mm), chest belt (10 x 135cm), belt for extremities (2.5 x 45cm), plate electrodes (20mm), carry case, ECG trolley



Expand your ECG with the following options:

- Full analysis and interpretation in words
- Spirometry attachment
- Connection to a PC with the BTL-08 Win software
- Upgrade to stress test system with the BTL-08 Win Ergo software



BTL-08 ECG: Overview of functions

Specifications	BTL-08 S1	BTL-08 S3	BTL-08 SD	BTL-08 MD	BTL-08 MD3	BTL-08 MT
External unit						
Display	Light indicators	Light indicators	Graphic display	Graphic display	Graphic display	Touch screen
Dimensions of display (mm)	-	-	70x36	70x36	70x36	90x125
Screen resolution (dots)	-	-	128x64	128x64	128x64	300x200
Keyboard	Functional	Functional	Combined alphanumeric and functional	Combined alphanumeric and functional	Combined alphanumeric and functional	Combined alphanumeric and functional, touch screen buttons
Battery indicator	Light control	Light control	On the display	On the display	On the display	On the display
Electrode contact control	Yes	Yes	Indication of contact of each electrode	Indication of contact of each electrode	Indication of contact of each electrode	Indication of contact of each electrode
Connector for accessories	No	No	No	Yes	Yes	Yes
Printer						
Paper width (mm)	58	58	58	112	112	112
Paper speed (mm/s)	5, 25, 50	5, 25, 50	5, 10, 25, 50	5, 10, 25, 50	5, 10, 25, 50	5, 10, 25, 50
Signal processing						
Number of channels	1	3	6	12	3	12
Number of leads	12	12	12	12	12	12
Displayed leads	-	-	1	1	1	3
Manual and automatic mode	Yes	Yes	Yes	Yes	Yes	Yes
Printed leads in automatic mode	1	1, 3	1, 3, 6	3, 6, 12	3	3, 6, 12
Printed leads in manual mode	1	1, 3	1, 3, 6	3, 6, 12	3	3, 6, 12
Transmission in automatic mode	Real-time	Real-time	Real-time, synchronic	Real-time, synchronic	Real-time, synchronic	Real-time, synchronic
Pacemaker detection	No	No	Yes	Yes	Yes	Yes
Sensitivity (mm/mV)	5, 10, 20	5, 10, 20	2.5, 5, 10, 20	2.5, 5, 10, 20	2.5, 5, 10, 20	2.5, 5, 10, 20
Stored records (10-s long strips)	-	-	6	6	-	14
Max. length of stored record (s)	-	-	10	10	-	10
Max. length of printed record in automatic mode (s)	10	10	20	20	20	20
Long ECG recording 1 lead/2 leads (min)	No	No	9/No	9/No	9/No	12/24
Digital filters						
Adaptable mains filter (Hz)	50-60	50-60	50-60	50-60	50-60	50-60
Muscle tremor filters (Hz)	35	35	35, 25	35, 25	35, 25	35, 25
Baseline filters (Hz)	0.125 (1.5s)	0.125 (1.5s)	0.125 (1.5s), 0.25 (0.6s), 0.5 (0.3s), 1.5 (0.1s)	0.125 (1.5s), 0.25 (0.6s), 0.5 (0.3s), 1.5 (0.1s)	0.125 (1.5s), 0.25 (0.6s), 0.5 (0.3s), 1.5 (0.1s)	0.125 (1.5s), 0.25 (0.6s), 0.5 (0.3s), 1.5 (0.1s)
User pre-set profiles						
Number of profiles for automatic and manual mode	1	1	3	5	1	10
Number of profiles for Long ECG recording	-	-	3	5	-	10
Indication of profile	Light control	Light control	Displayed name of profile	Displayed name of profile	Displayed name of profile	Displayed name of profile